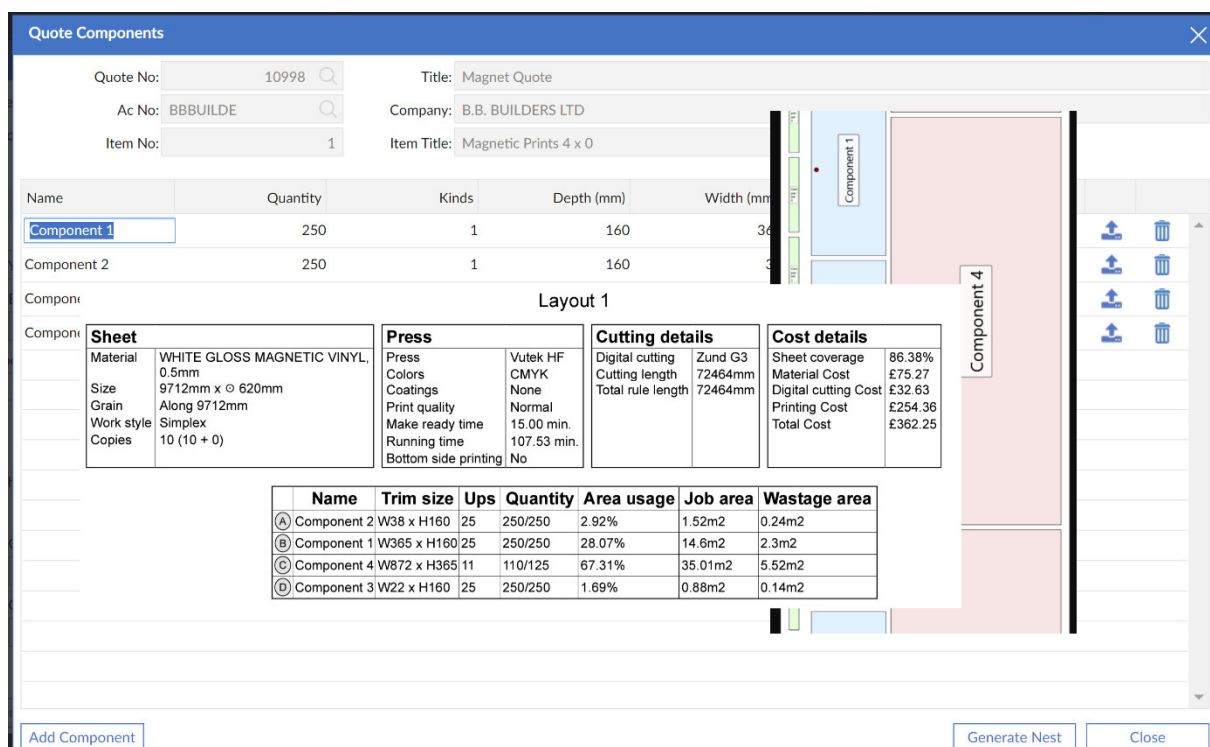


Automatic Image Nesting with SolPrint

If you have a need for multiple components of varying sizes to be planned together to help optimize production SolPrint has the solution for you.

From within SolPrint Estimating a Component screen allows for you to detail a number of components with their relevant size and quantities defined.



Quote Components

Quote No: 10998 Title: Magnet Quote
 Ac No: BBBUILDE Company: B.B. BUILDERS LTD
 Item No: 1 Item Title: Magnetic Prints 4 x 0

Name	Quantity	Kinds	Depth (mm)	Width (mm)
Component 1	250	1	160	36
Component 2	250	1	160	

Layout 1

Component	Sheet	Press	Cutting details	Cost details
Component 1	Material: WHITE GLOSS MAGNETIC VINYL, 0.5mm Size: 9712mm x 620mm Grain: Along 9712mm Work style: Simplex Copies: 10 (10 + 0)	Press: Vutek HF Colors: CMYK Coatings: None Print quality: Normal Make ready time: 15.00 min. Running time: 107.53 min. Bottom side printing: No	Digital cutting: Zund G3 Cutting length: 72464mm Total rule length: 72464mm	Sheet coverage: 86.38% Material Cost: £75.27 Digital cutting Cost: £32.63 Printing Cost: £254.36 Total Cost: £362.25

	Name	Trim size	Ups	Quantity	Area usage	Job area	Wastage area
(A)	Component 2	W38 x H160	25	250/250	2.92%	1.52m2	0.24m2
(B)	Component 1	W365 x H160	25	250/250	28.07%	14.6m2	2.3m2
(C)	Component 4	W872 x H365	11	110/125	67.31%	35.01m2	5.52m2
(D)	Component 3	W22 x H160	25	250/250	1.69%	0.88m2	0.14m2

Buttons: Add Component, Generate Nest, Close

Selecting the Generate Nest button sends an XML to the respective Nesting software and the resulting layouts and run details are stored in the SolPrint Document Management System for review and use in Production.

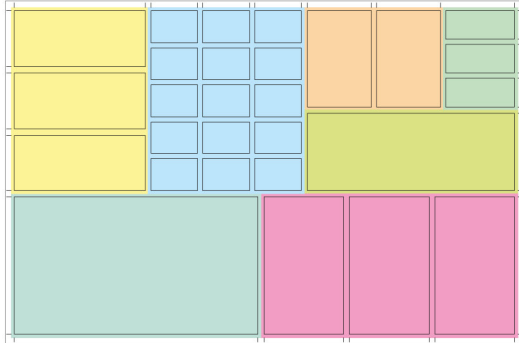
A selected Material size can be defined or the system can return the optimal production for all available sizes.

SolPrint automatically calculates all the related costs and highlights the % waste for easy review.

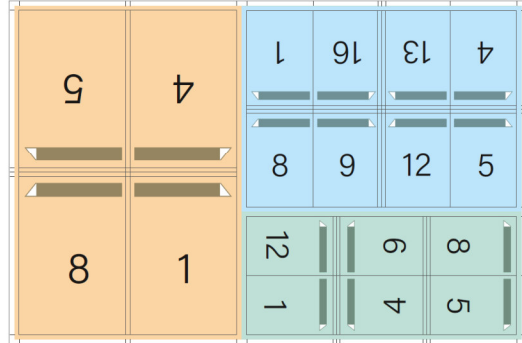
The Profits margins can then be applied before the Quote is shared with the client.

A number of Ganging options are covered by the 3rd party nesting system with a few shown below:

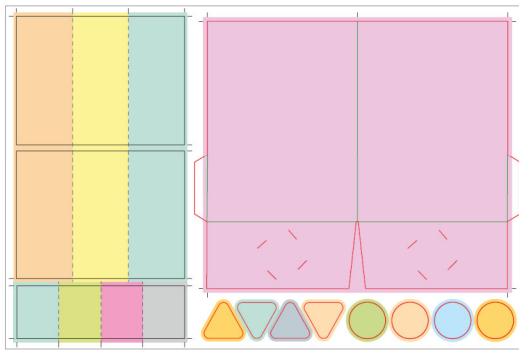
Flatwork Ganging



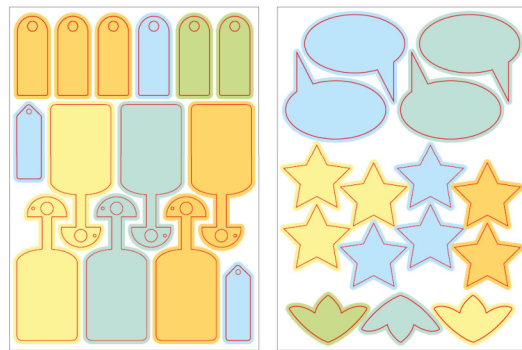
Signature Ganging



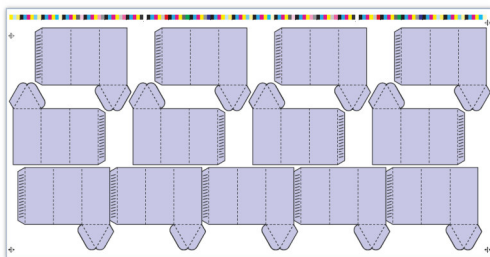
Mix Jobs Ganging



Stickers, Tags, Labels Ganging

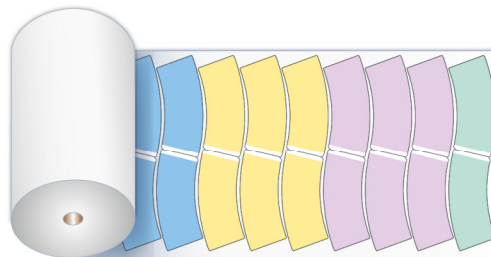


ADAPTIVE INTERLOCKING



When constrained by sheet sizes or reel widths, software dynamically generates multiple interlocking patterns for a single job.

REEL SHEETING

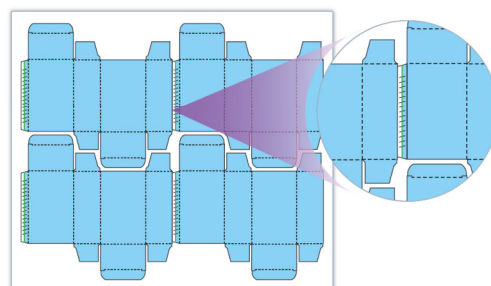


Software's ability to suggest sheet sizes from the paper / board reels in the inventory results in huge paper savings.

SAME DIE - MULTIPLE ARTWORKS



INTELLIGENT SINGLE & DOUBLE CUTS





Automatic Image Nesting

Why not contact us now for a no obligation demonstration where we can show you how SolPrint could be implemented within your operation.

Contact Details

Email: sales@solprint.co.uk Tel: 020 7978 0113

Address: Penhurst House, 352-356 Battersea Park Road, London SW11 3BY